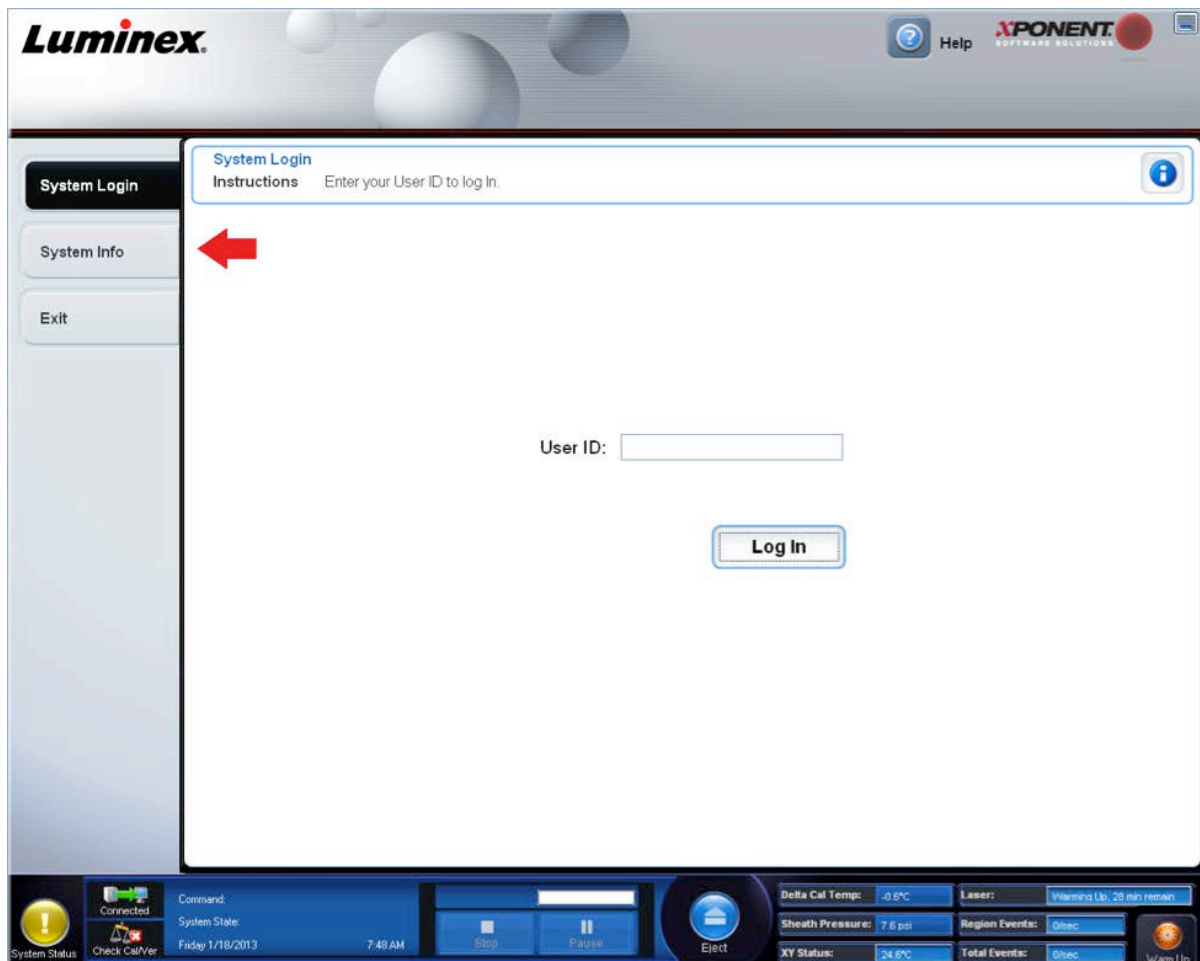


Software Version and Instrument Serial Number Information

The software version and instrument serial number are reported in the “System Info” tab in the xPONENT software. To locate this information make sure the MAGPIX instrument is powered on and connected to the PC. Open the xPONENT Software application, and on the initial System Login screen, select the “System Info” tab on the left side of the window as shown below.



On the “System Info” tab, the xPONENT Software version will be listed on the second line next to “Version”.

The screenshot displays the Luminex xPONENT software interface. At the top, the user is logged in as 'Administrator'. The main navigation bar includes 'Home', 'Samples', 'Batches', 'Results', 'Protocols', 'Maintenance', and 'Admin'. The 'Maintenance' tab is active, showing the 'System Information' page. The left sidebar contains various maintenance-related options: 'Auto Maint', 'Lot Management', 'Cmds & Routines', 'Probe & Heater', 'System Info' (selected), 'System Status', 'Schedule', and 'Support Utility'. The main content area displays the following system information:

System Information	
Instructions View, copy, or save information and diagnostics about this instrument.	
Software	Luminex xPONENT® for MAGPIX
Version	4.2 Build 1324
Operating System	Windows 7 (6.1.7601.65536 Service Pack 1)
Licensing	Base Software, LIS, 21 CFR Part 11, Automation, Security, Allelic Ratios, Instrument Control, Remote Web Monitoring
Instrument Type	MAGPIX
Serial Number	MAGPX10169101
Firmware Version	1.1.539
XYP Heater Temperature	Heater Off
Calibration/Verification Status	Calibration date exceeded 7 day limit
Last Calibration	Passed: 7/7/2014 2:31:27 PM
Last Verification	Passed: 7/7/2014 2:32:24 PM
Last Fluidics Test	Passed: 7/7/2014 2:33:39 PM
Delta Calibration Temp	-0.3° C (Calibration Temperature: 24.00° C, Tolerance: ±5.00° C)
System Temperature	23.7° C
Drive Fluid	Ok
Waste Fluid	Ok

At the bottom of the interface, there is a status bar showing 'System Status' (Connected), 'Command:' (System State), 'Tuesday 7/22/2014 9:00 AM', and buttons for 'Stop', 'Pause', 'Eject', and 'Power Off'. On the right side of the status bar, there are indicators for 'Drive Fluid Level: ✓', 'Waste Fluid Level: ✓', 'Delta Cal Temp: -0.3°C', and 'XY Status: 24.3°C'.

The MAGPIX serial number will be listed on the sixth line next to "Serial Number". The serial number will begin with the characters 'MAGPX'.

Auto Maint

Lot Management

Cmnds & Routines

Probe & Heater

System Info

System Status

Schedule

Support Utility

System Information

Instructions View, copy, or save information and diagnostics about this instrument.

Software	Luminex xPONENT® for MAGPIX
Version	4.2 Build 1324
Operating System	Windows 7 (6.1.7601.65536 Service Pack 1)
Licensing	Base Software, LIS, 21 CFR Part 11, Automation, Security, Allelic Ratios, Instrument Control, Remote Web Monitoring
Instrument Type	MAGPIX
Serial Number	MAGPX10169101
Firmware Version	1.1.639
XYP Heater Temperature	Heater Off
Calibration/Verification Status	Calibration date exceeded 7 day limit
Last Calibration	Passed: 7/7/2014 2:31:27 PM
Last Verification	Passed: 7/7/2014 2:32:24 PM
Last Fluidics Test	Passed: 7/7/2014 2:33:39 PM
Delta Calibration Temp	-0.3° C (Calibration Temperature: 24.00° C, Tolerance: ±5.00° C)
System Temperature	23.7° C
Drive Fluid	Ok
Waste Fluid	Ok

Copy Save



Connected
Check CalVer

Command:
System State:
Tuesday 7/22/2014 9:00 AM

Stop Pause Eject

Drive Fluid Level:

Delta Cal Temp: -0.3°C

Waste Fluid Level:

XY Status: 24.3°C

