

**Luminex**

# ARIES<sup>®</sup>

Welcome to the New Way to Work



# ARIES®

## Welcome to the New Way to Work

The ARIES® System is crafted to increase laboratory efficiency, ensure result accuracy, and fit seamlessly into today's lean laboratory.

### Designed for Improved Lab Efficiency and Workflow

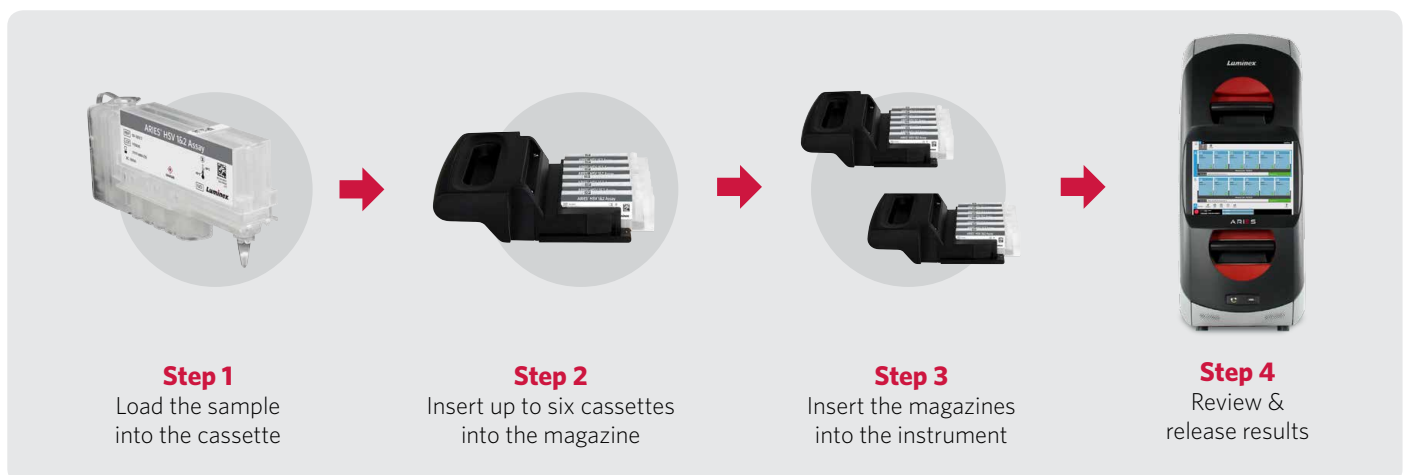
- Universal Assay Protocol may enable multiple sample types and up to 12 different assays to be run together in a Random Batch.
- ARIES® software and user interface allow you to control every aspect of the sample to answer environment in your laboratory.
- Two independent modules allow for simultaneous STAT and batch testing on a single ARIES® System.
- Electronic reporting accelerates delivery of results.

### Designed for Seamless Integration and Testing Accuracy

- Internal barcode scanning matches samples to cassettes, enabling Position Independent Results no matter where each cassette is placed.
- Integrated sample processing control ensures the assay run is successful from extraction through amplification.
- Bidirectional LIS connectivity enables electronic ordering.\*
- Integrated touchscreen PC eliminates the need for computer peripherals, maximizing valuable bench space.

\*Validation of the LIS compatibility must be performed by the user.

### Workflow



## Specifications

Physical Dimensions (Approximate)	39.1 cm x 61.2 cm x 95.0 cm (15.4" x 24.1" x 37.4")						
Weight	63.5 kg (140 lb)						
Power Supply	120 volts (US) or 220 volts (EU)						
Startup Time	Less than 5 minutes						
Hands-on Time**	Less than 2 minutes/sample						
Time to Results	Less than 2 hours						
Throughput	12 samples in less than 2 hours 48 results in 8 hours						
Sample Input Volume	200-400 µL						
Processing	2 Independent modules (1-6 samples/module); allows Random Batch and STAT testing						
Data Input	Handheld/internal bar scanning/manual						
PC	Integrated touchscreen						
Operating System	Microsoft® Windows Embedded 7						
Consumables	ARIES® assay cassettes						
Ancillary Equipment (optional)	Printer for ARIES® instrument						
Heat Source	Peltier						
Heat Output (BTU)	2730						
Operating Temperature	15° C to 35° C (59° F to 95° F)						
Temperature Control	55° C to 95° C (131° F to 203° F) within +/- 1.0° C						
Connectivity	Network and 5 x USB Type-A ports						
Network Settings	Integrates bidirectionally with LIS either through HL7 or CSV file formats						
Detector	Photodiode						
Optical Channels	Channels	1	2	3	4	5	6
	Ex/Em (nm)	390/475	464/517	525/556	557/588	594/624	630/690

\*\*Some assays may require preparation prior to loading the cassette.

## Ordering Information

<b>Product Name</b>		ARIES® Two Module System (IVD)
<b>Part Number</b>		ARIES-M12V1-IVD
<b>ARIES® System Core Components Included</b>		
Instrument		
Two Magazines		
Two Sample Prep Trays		
Handheld Barcode Scanner and Stand		
System Operation Manual IVD		
Quick Guide IVD		
Power Cord		
<b>Optional Components</b>		
Printer for ARIES® Instrument, Dell C1760nw		CN-PC13-01 (US) For all others, contact your country office for information.



**orders@luminexcorp.com or support@luminexcorp.com**

For In Vitro Diagnostic Use. Products are region specific and may not be approved in some countries/regions. Please contact Luminex at support@luminexcorp.com to obtain the appropriate product information for your country of residence. The ARIES® Systems are class 1(I) laser products.

©2015-2017 Luminex Corporation. All rights reserved. Luminex and ARIES are trademarks of Luminex Corporation, registered in the U.S. and other countries. Microsoft Windows is a trademark of Microsoft Corporation.

[www.luminexcorp.com](http://www.luminexcorp.com)

HEADQUARTERS	EUROPE	CANADA	CHINA	JAPAN
UNITED STATES	+31.73.800.1900	+1.416.593.4323	+86.21.802.31150	+81.3.5545.7440
info@luminexcorp.com	europe@luminexcorp.com	info@luminexcorp.com	info@luminexcorp.com	infojp@luminexcorp.com