

## NxTAG®

For use with the NxTAG®-enabled MAGPIX® System

### NxTAG® Respiratory Pathogen Panel (RUO)



### Syndromic Testing Made Easy

The NxTAG® Respiratory Pathogen Panel is a comprehensive assay that simultaneously detects multiple respiratory pathogens in a closed tube, easy to use system.

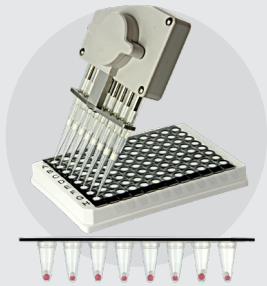
- Comprehensive Panel of Targets
- Minimal Contamination Risks
- Minimal Hands-on Time
- Rapid Turnaround Time
- Customizable, Scalable Throughput

#### Viral Targets

Influenza A  
Influenza A - H1 subtype  
Influenza A - H3 subtype  
Influenza A 2009 H1N1 subtype  
Influenza B  
Respiratory Syncytial Virus A  
Respiratory Syncytial Virus B  
Parainfluenza 1  
Parainfluenza 2  
Parainfluenza 3  
Parainfluenza 4  
Human Bocavirus  
Human Metapneumovirus  
Rhinovirus/Enterovirus  
Adenovirus  
Coronavirus HKU1  
Coronavirus NL63  
Coronavirus OC43  
Coronavirus 229E

#### Bacterial Targets

*Chlamydomphila pneumoniae*  
*Legionella pneumophila*  
*Mycoplasma pneumoniae*



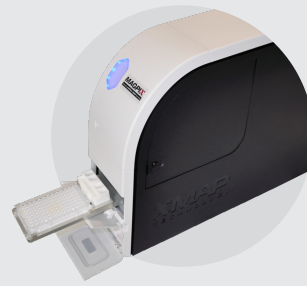
### Step 1

Add 1-96 extracted samples to pre-plated test wells



### Step 2

Run multiplex PCR and bead hybridization



### Step 3

Read on NxTAG®-enabled MAGPIX®

## Ordering Information

Product Name	Part Number
NxTAG® Respiratory Pathogen Panel (RUO)	X051C0451 (96 Tests)

**Luminex**  
complexity simplified.

**orders@luminexcorp.com or support@luminexcorp.com**

For Research Use Only. Not for use in diagnostic procedures. Please contact Luminex at support@luminexcorp.com to obtain the appropriate product information for your country of residence.

©2016-2021 Luminex Corporation. All rights reserved. Luminex, NxTAG, MAGPIX, and xPONENT are trademarks of Luminex Corporation, registered in the U.S. and other countries.

**luminexcorp.com**

HEADQUARTERS  
UNITED STATES  
+1 512 219 8020  
info@luminexcorp.com

EUROPE  
+31 73 800 1900  
europe@luminexcorp.com

CANADA  
+1 416 593 4323  
info@luminexcorp.com

CHINA  
+86 21 8036 9888  
info@luminexcorp.com

JAPAN  
+81 3 5545 7440  
info@luminexcorp.com